

**HISTORY**

Time Allowed: 3 hr.

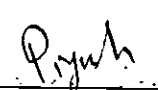
Max. Marks: 250

**Instructions to Candidate**

- There are SIX questions divided in Two Sections and printed in ENGLISH.
- Candidate has to attempt FIVE questions in all.
- Question no. 1 & 4 are compulsory and out of the remaining, THREE are to be attempted choosing at least TWO from each section.
- The number of marks carried by a question/part is indicated against it.
- Answers must be written in the medium authorized in the Admission certificate which must be stated clearly on the cover of this Question-cum-Answer (QCA) booklet in the space provided. No marks will be given for answers written in medium other than the authorized one.
- Word limit in questions, wherever specified, should be adhered to.
- Attempts of questions shall be counted in chronological order. Unless struck off, attempt of a question shall be counted even if attempted partly.
- Any page or portion of the page left blank in the answer book must be clearly struck off.

Name ISWAR KUMAR KANDOO

Mobile No. \_\_\_\_\_

Date 05.09.2017.Signature 1. Invigilator Signature 

2. Invigilator Signature \_\_\_\_\_

## REMARKS

- Think in various dimension.
- Lack of facts and analysis.
- Write to the point.
- Improve presentation
- Work on context
- Use key words of question  
or in answer.
- Work on Tag words  
eg. Evaluate  
Critically evaluate

Roll No. \_\_\_\_\_

**SECTION- A**

1. Identify the following places marked on the map supplied to you and write a short note of about 30 words on each of them in your "Question-cum" Booklet. Locational hints for each of the places marked on the map are given below seriatim. (2.5 × 20 = 50 Marks)

1. A Neolithic-Chalcolithic Site
2. A Mesolithic Site
3. A port site
4. A capital city
5. A Paleolithic site
6. A late Harappan site
7. A Harappan site
8. An capital city
9. An Art Centre
10. An Inscription site
11. A Paleolithic site
12. A Chalcolithic site
13. A Buddhist centre
14. A trade centre in Ancient India
15. An ancient capital
16. An Early Harappan site
17. A Temple site
18. An ancient capital
19. A political and cultural center
20. An ancient town

**Remarks**

1. Kayatha : ↳ Situated in Madhya Pradesh.  
 ↳ Grey ware potteries of chocolate like colours were found.  
 ↳ evidences of Copper, bronze artefacts along with animal bones i.e. chopper, cleaver etc found.  
 ↳ food grains i.e. rice, wheat, millets etc found.  
 ↳ settlements consists of wattle-daub, mud etc

2. Pandu Rajar Dahi :  
 ↳ Various microliths i.e. arrow heads etc were found near. (size 1-5 cm).  
 ↳ Animal bones of both wild & domesticated animals.  
 ↳ It also shows evidences of later period i.e. chalcolithic period with grey-red potteries & roman pottery.

3. Arikamedu :  
 ↳ Present Pondicherry.  
 ↳ one of the oldest portsite involved in trade with Romans, South east asia etc  
 ↳ export : spices, cotton-textile, silk etc  
 ↳ Imports - Colds, wines, frgs etc  
 ↳ mentioned in Pliny's 'natural historia' &  
 ↳ Various roman coins were found along with roman potteries

Remarks

4. ~~Tanjore~~ 1  
 ↳ Situated in Tamil Nadu.  
 ↳ Capital of imperial Cholas.  
 ↳ famous temple - Bairhadishwara temple constructed by Rajaraja Chola.  
 ↳ Also an art & cultural & educational centre.

5. ~~Kurnool Caves~~  
 ↳ Situated in Andhra Pradesh  
 ↳ earliest evidence of human's <sup>in India</sup> presence found along with Bhimbetka.  
 ↳ Palaeolithic stone tools, i.e. coarse & rough tools - stone hammer, shopper, core tools etc found.  
 ↳ Animal bones of wild boars, deers etc found.

6. ~~Alamgirpur~~  
 ↳ Situated in Uttar Pradesh.  
 ↳ Harappan objects i.e. seals, sealings, beads, terracotta objects, stone & metal artefacts etc are present.  
 ↳ Potteries of post Harappan period were also found. (Black & red along with greyware)  
 ↳ town seems haphazardly planned.  
 ↳ food grains: wheat, barley etc found as well.

Remarks

7.

Harappa ✓ & Situated in Pakistan.

✓ 1st harappan site to be excavated by

R.K. Banerjee under Sir John Marshall.

✓ Town planning with proper house size,  
road pattern (90° crossing), brick pattern  
(1x2x4 inch) etc are found.

✓ Black & red pottery, seals, beads, terracotta, etc  
mother goddess etc found.

8.

Peshawar / Waihind

✓ Also known as Pusushpur,

✓ Situated in Pakistan.

✓ was capital of Kushanas during the time  
of Kanishka, later became capital of Hindu  
shahi rulers & known as Waihind.

✓ Connected to Uttarapath Tamralipti via  
Uttarapath, near Taxila university.

9.

Remarks

10.

Vidisha:

- ↳ situated in Madhya Pradesh.
- ↳ Also known as Besnagar.
- ↳ Post mauryan <sup>'Caranda'</sup> inscriptions were found constructed by which provides information regarding socioeconomic political information of post mauryan period. i.e. Sungas.
- ↳ situated near famous buddhist centre of Sanchi.

11.

Sarai Nahar Rai / Belan Valley:

- ↳ situated in Allahabad.
- ↳ evidence regarding mesolithic & neolithic periods were also found here.
- ↳ Stone tools such as core tools & handaxe, chopper, cleaver, cutter etc found.
- ↳ Animal bones were also found.

12.

Balathal:

- ↳ situated in Gujrat.
- ↳ Related with Ahar culture developed between 2000-1600 BC.
- ↳ Copper-bronze artifacts were found (arrow heads etc).
- ↳ mud-made houses, burials along with goods.
- ↳ Potteries - ochre-coloured potteries, black red ware.

Remarks

13. Sanchi | ↳ situated in Madhya Pradesh near Bhopal.

↳ famous Buddhist cultural site.

↳ Sanchi stupa is here which is build on Buddha's relics.

↳ original stupa's made of wood which is covered by outer layers made of stone.

↳ Toranas of stupa is constructed with intricate carving. ~~with~~

↳ Pradakshina Path, Medhi, harmika, Anda, Chhatra etc are the part of its architecture.

14.

15. Paitthan / Pratisthan | ↳ famous centre during Satavahana period.

↳ situated in Maharashtra.

↳ Also a famous trade centre connected with Ujjain & other south India.

Remarks ↳ used to trade spices, golds, silk etc.



16. ~~Amri~~ is situated in Pakistan.
- ↳ Evidences of settlements regarding 3100-2600 BC
  - ↳ Evidence of houses built of mud bricks, black red pottery & terracotta objects also found.
  - ↳ food grains: pea, mustard, barley, wheat etc found.

17. ~~Aihola~~ is situated in Karnataka.
- ↳ famous temple site which depicts the beautiful examples of Chalukyan architecture.

- ↳ temples: Durga temple, Ladkhan temple etc.
- ↳ Both Nagara & Dravida style temples are there & later <sup>constructed</sup> Vesara style temples are also found.
- ↳ Ravikirti's inscription regarding Pulakeshin II victory over Harsha is also found.

Remarks

18. Pataliputra → Modern Patna in Bihar.  
 ↳ Capital of Maurians, Sungas as well as Guptas.  
 ↳ confluence of rivers like Ganga & Son.  
 ↳ famous political as well as cultural centre where various sects i.e. Buddhism, Jainism etc. got patronage.

19. ~~Sakad / Sialkot~~  
Manshara / Shahbazgarhi →  
 ↳ situated in Pakistan  
 ↳ famous Ashoka's edicts were also found here.  
 ↳ Also a major political centre during Kushanas as well as of Kashmir rulers during later period.

20. Amaravati →  
 ↳ Capital of Satvahans,  
 ↳ situated in Andhrapradesh, its capital.  
 ↳ famous cultural centre of Buddhist, Jainist & Brahmanical centres.  
 ↳ Amaravati school of art is famous for Buddhist beautiful depiction.

Remarks ↳ Recently ~~some~~ some sites were recognised as heritage sites by UNESCO.

2. (a) 'Man is born free, and everywhere he is in chains. One man thinks himself the master of others, but remains more of a slave than they are.' Elaborate. (15 Marks)
- (b) 'The French Revolution had as its essential cause the power of a mature bourgeoisie cramped by the privileges of a decadent aristocracy'. Explain (20 Marks)
- (c) 'Banks played a more important role in continental European industrialization than they did in England's.' Elucidate (15 Marks)

Q: 2(a)

6  
 Rousseau was a great philosopher during 18th century who propagated the idea of 'general will' i.e. 'free will's'.  
 In the above sentence, 'man is born free & everywhere he is in chain', Rousseau wanted to show the contradiction of human life where a human being is supposed to ~~look~~ live independently & ~~egalitarian~~ manner without any inequality but in reality, he is forced to face the inequality generated by ~~and~~ aristocratic & feudal classes.

He valued equality more than liberty  
 explain it

In his book 'The discourse of origin on inequality', he

Remarks

emphasises the need for equality & egalitarianism in the society.

In his work 'Social Contract' Rousseau proposed that there is an agreement between the ruler & people. <sup>while normally a</sup> Ruler thinks that he is the master of its citizens as he holds the power but in reality, he is not the master, but merely 'a first among equals', who have been given the responsibility for providing welfare to the community.

This relation was explained by Rousseau in 'social contract' -

He also said that if a ruler is not ready to work for people then it is legitimate for people to overthrow him. This thinking gave birth to future revolutions like French revolution 1789.

Thus through this sentence Rousseau wanted to emphasise his

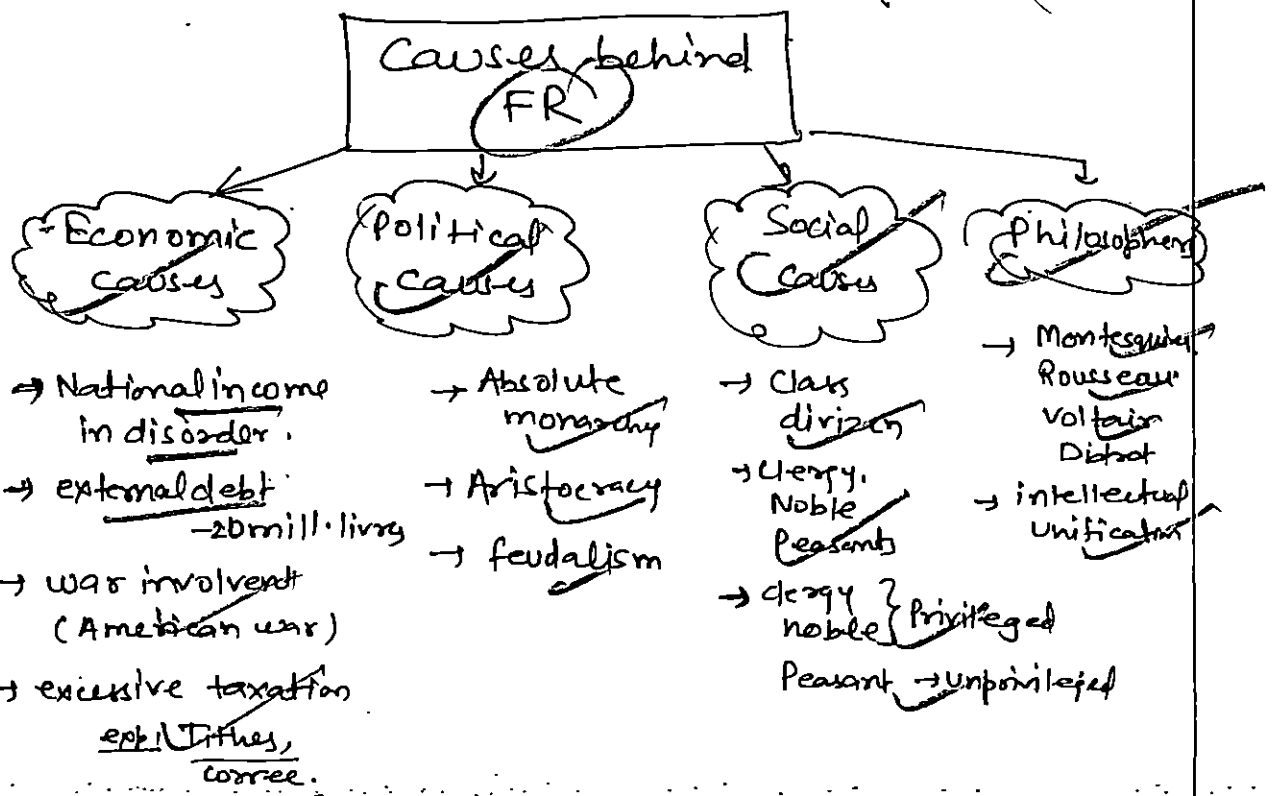
Remarks

idea of 'general will' & 'social contract' between ruler & citizens.

Q: 2(b) French revolution (1789) was one of the (FR)

most important revolution as it replaced the autocratic absolute monarchy with modern democratic constitutional monarchy.

These are various causes behind the emergence of French revolution which can be depicted as below:



Remarks

besides them, there were various immediate causes like excessive tax, religious anarchy etc. However among all these, it was the difference between privileged aristocracy & middle class bourgeoisie which gave spark to the fuel of French revolution.

In France, before 1789, there was two groups in society. Privileged class consist of clergy men & nobles, while unprivileged class consists of peasants, artisans etc. Privileged class, though consist only ~2% of total French population but used to control ~35% of national resources.

On the other hand middle class & peasant of ~98% population used to control only 65% of resources. Various taxes such as corvée, Tithes were imposed on unprivileged section & the privilege section was exempted

Remarks

from the taxes. Practices like 'letters of decahete' were used to provide judicial power to aristocracy.

The situation was started changing in later part of 18<sup>th</sup> century. Due to enlightenment & work of philosophers like Voltaire, Rousseau, Montesquieu & Diderot, middle class get awakened & they started opposing the aristocratic practices.

When King Louis XVI starts to increase tax on this section, they demanded call for 'estate general', so that middle class could bring 'privileged aristocratic class' too under the ambit of taxation. When they failed to achieve their objective, they came on road & break the prison of Bastille & manors of feudal lords, which started the French revolution.

Thus it was the reaction of middle class against privileged aristocracy which commenced the French revolution.

Remarks

In brief write the impact of  
F.R.

Q.2(c)

5/2

Industrial revolution started from the Britain in 1760s. Among various factors, banks too played an important role for industrial revolution in Britain. However, they provided capital to British industries & businessmen to expand their industries. However, the role of banks should not be exaggerated because it was much limited in nature due to following reasons.

↳ Britain has extensive colonial empire unlike other continental European nations, this vast colonial empire fulfilled the demand of capital & thus Britain needed much lesser help from banks.

ex: 1 'Drain of wealth' from India used as investments in industrial revolution of Britain.

Remarks



↳ Presence of reserves i.e. coal, iron, cotton required much lesser borrowing by capitalists who already were wealthy.

However in other continental nations like France, Germany, Russia etc.

banks played more important role due to,

↳ They have limited colonial empire as compare to Britain, so they could not extract much amount of capital & raw material.

↳ Absence of capitalist wealthy class in these nations.

↳ Promotion of banks by Rulers like Napoleon who set up bank of France in 1809 during the period of continental blockade.

Thus banks played much important role in continental European nations due to political support.

Financial revolution - led to industrial revolution

Remarks colonial reasons & absence of capitalists.

• Avoid repetition

• Write more facts

|  |  |  |
|--|--|--|
|  |  |  |
|--|--|--|

*Remarks*

3. (a) 'Among the makers of modern Italy Mazzini holds an imperishable place.' Assess. (15 Marks)
- (b) 'The Peace of Paris could not solve the problems in the Balkans.' Analyse. (20 Marks)
- (c) 'The condition of Europe between 1904 and 1914 has often been called "international anarchy".' Discuss (15 Marks)

Q. 3(a) Mazzini was an Italian nationalist

⑥ who played a very important ~~not~~ role in the process of unification of Italy.

Besides Mazzini, there are various makers of modern Italy such as Cavour, Victor Emmanuel-II, Garibaldi & Gioberti but Mazzini holds an imperishable place because he was the one who initiated the process through intellectual unification of highly diverse Italian population.

Before ~~18~~ 1796-97, Italy was just an geographic entity, Napoleon united the North, south & central Italy but it was again reversed by Vienna Congress in 1815.

Remarks

From here, Mazzini started awakening the feeling of common culture among the Italians. He started Young Italy movement in 1832 & tried to liberate Italy from the despotic rule of Metternich (Austrian Chancellor). He aroused the Italians by making them remember the ancient glory of Italy. He wanted to establish a democratic republican united Italy.

After failure in 1830 attempt, Mazzini again tried to liberate Italy in 1848 with the help of Piedmont-Sardinia,  pope & french king, though again his attempt failed but it generated the feeling of unification among Italians & they started supporting the later attempts for unification of Italy which was completed by Cavour.

Remarks

• Also write critique of Mazzini

Thus it was Mazzini, who created the script of Italian unification by his young Italy movement.

Q.3(b) Balkans refers to those east European

countries who were under the control of Ottoman empire since 15-16th century.

Problems in the Balkans |

There are various problems faced by the Balkan countries like Serbia, Bulgaria, Romania, Albania etc. which are as follows:

① Degradation of Ottoman Empire |

During 19th-20th century, Ottoman empire started declining & its control over Balkan countries started weakening. It had become the Sickman of Europe due to existing crisis.

Remarks

## ② Cultural Differences →

There was a vast cultural difference between the (Slav) population in Serbia, Christians in Albania & Muslims in Ottoman Empire. It created various conflicts & every country had their own aspiration.

## ③ Socio-economic Condition →

Socio-economic condition of Balkan nations was very poor as they were still root of industrial revolution & enlightenment.

## ④ Russian Policy →

Russia adopted 'warm water policy to make its control over Black Sea because Russian ports used to get frozen during winters. This Russian policy was against the interest of Britain & France which made Balkan - a battle ground for forth coming Crimean war (1853-56).

Remarks

1853

Thus above factors created problems for the Balkans. Crimean war was fought between Russia & its supporters & Britain, France, Italy etc. Russia got defeated & Paris Peace Conference was called to solve the issue. It was expected that now the Balkans problems would be solved but it could not happen because the terms of Paris Peace Conference was humiliating for Russia as it had to leave all its control over Black Sea & Eastern European nations.

Balkan nations again came under the despotic Ottoman Empire, which was already a sick man of Europe, to whom Britain & France wanted to preserve. The outcome of Paris Peace Conference started further struggles which formed the background of First World War in the form of Eastern Question.

Remarks

Impact of peace treaty — —  
only delayed the disintegration  
of the Ottoman Empire

Q13(c) Between 1904 & 1914 various incidents took place in the Europe, which directly or indirectly created the background for World War I, that's why in this period the condition of Europe is called international anarchy.

These conditions are as follows

[1] Aggressive Imperialism →

During this period, most of the European nations adopted the policy of aggressive imperialism. Countries like <sup>Germany,</sup> Russia, Serbia, Bulgaria, Austria etc were involved in satisfying their aggressive needs. Leaders like Kaiser William, Zar Nicholas were responsible.

[2] ~~External~~ Arm Race

Arm race have been started among all the major European nations - Britain, France, Russia etc.

Remarks



all tested various missiles, submarines, poison-gases, weapons etc which created the situation of anarchy.

### 3) Secret Alliances →

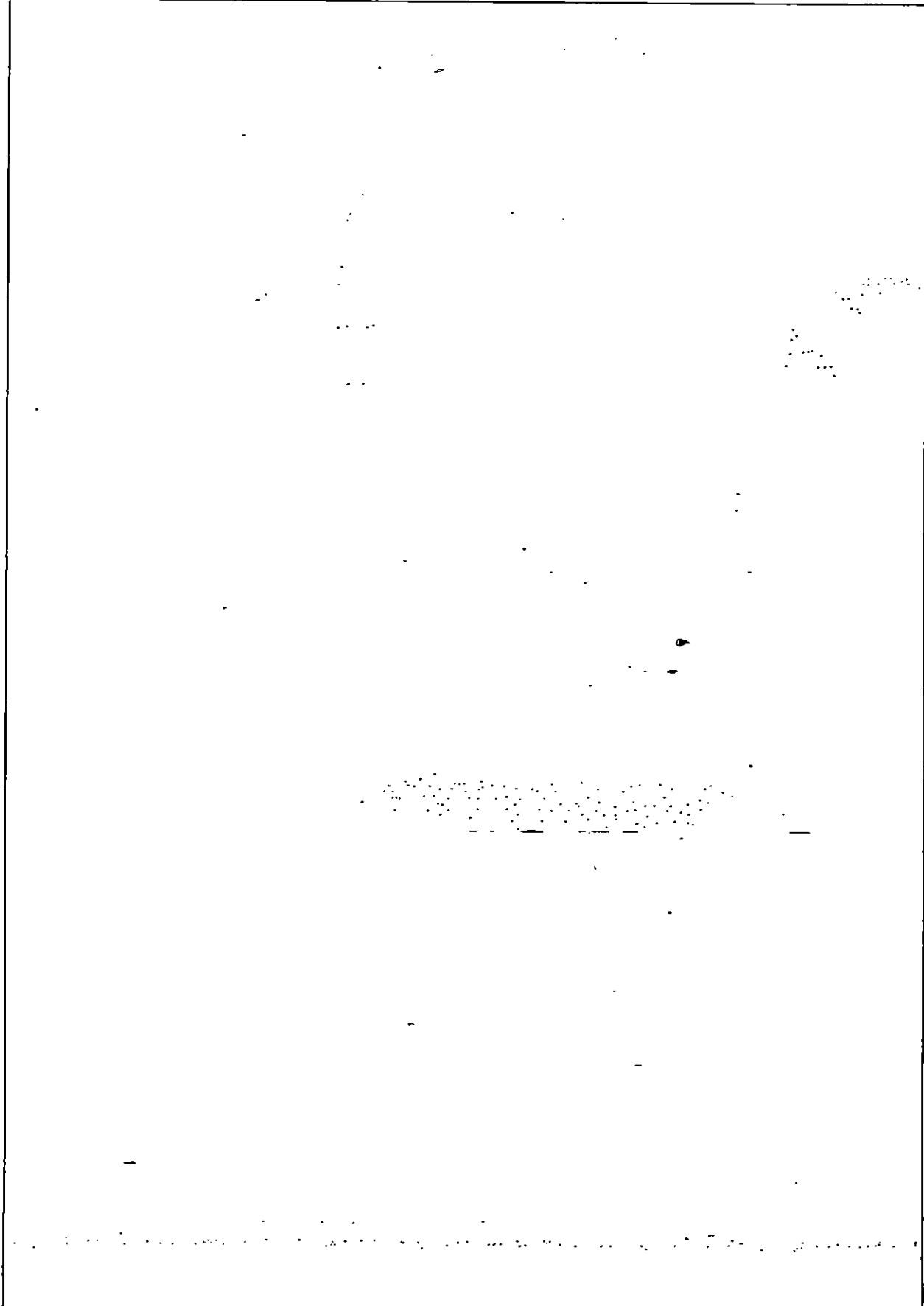
During this period various secret alliances were formed. Britain-France & Russia formed Triple Entente while Germany, Italy, & Austria-Hungary formed Triple Alliance. These secret alliances created the situation of anarchy as nobody was willing to trust each other due to its secret nature.

### 4) Incidents →

Incidents like assassination of Austrian Prince, Japan's invasion of Manchuria, Balkan wars (1912-13) etc accelerated the causes of World War-I & thus made Europe as a centre of international anarchy.

#### Remarks

↳ Write about the effort to prevent this international anarchy - eg Red Cross Convention, Universal Peace Congresses.



*Remarks*

## SECTION-B

4. Write short notes in not more than 150 words on each of the following: (10 × 5 = 50)

- 'The league sought to transform the war mentality of man into a peace mentality.'
- 'As in 1919, the most momentous indirect results of the Second World War were entirely unintended and unforeseen.'
- "The Marshall plan was a bold and imaginative declaration."
- 'Non-aligned movement achieved less than what its leaders aspired for'. Comment.
- 'The Outbreak of the First World War, gave Japan the opportunity to realize her imperialistic designs in the Far East.'

Q. 4(a) League of nation (LON) was formed

in 1919 after the 1st world war which was fought between 1914-1918.

It was created to transform the war mentality of a man into a peace mentality through following way:

↳ It promoted the objective of international peace & fraternity. As world war - I

saw the loss of 0.5 million life, it was created to improve peace.

Remarks

Albania Stand off, resolution of quered b/w Italy and Greece. Kellogg-Briand pact.

↳ Idea of collective security was promoted by League, through this idea it ensured the absence of war.

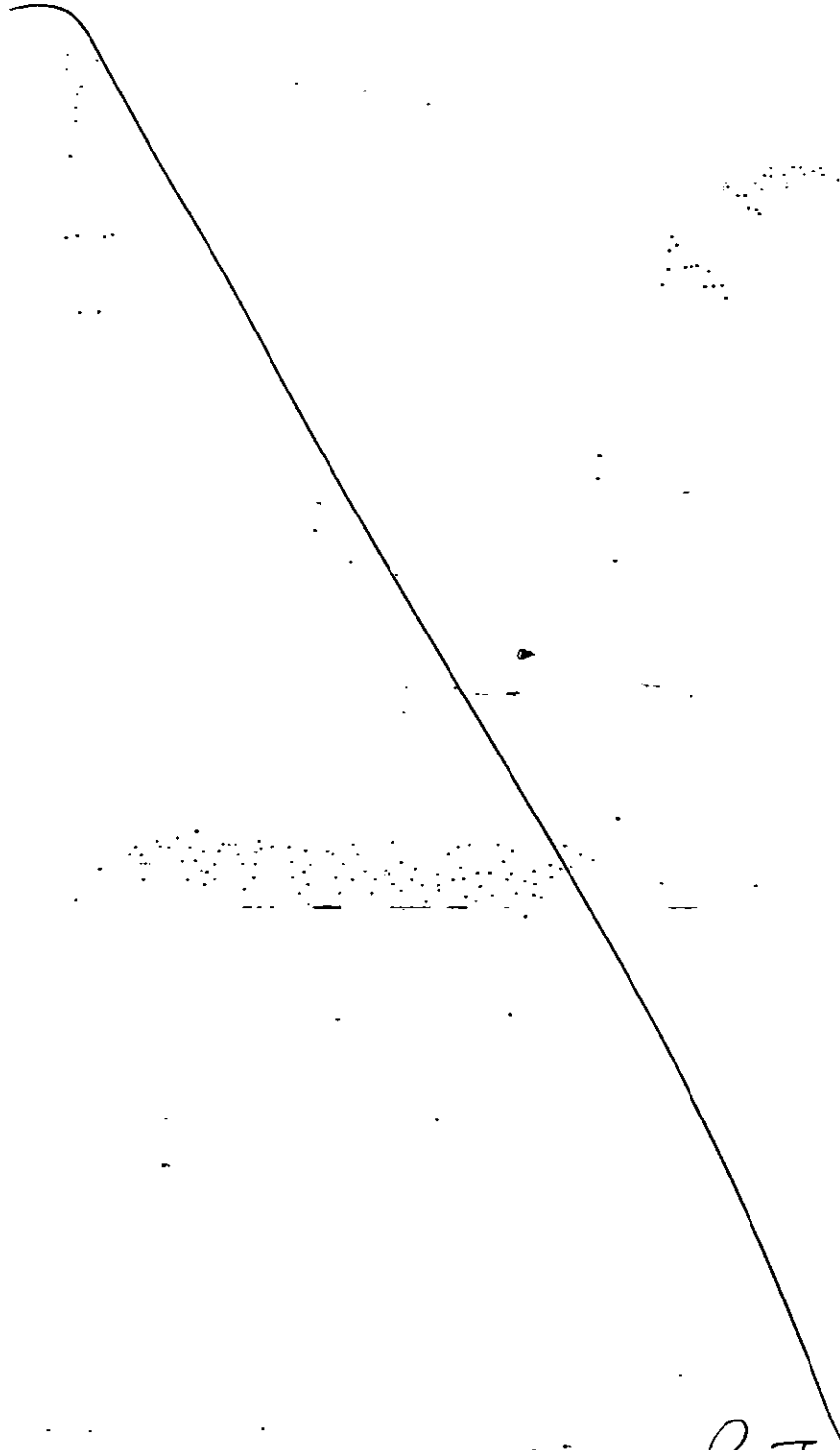
↳ Sociocultural organizations like ILO etc was created by league to promote peace & welfare measures.

↳ League ~~owns~~ owns various disputed mandates so that the issue could be solved peacefully.

However ~~the~~ League couldn't succeed much due to Anglo-French monopoly, limited monopoly, defects of Paris Peace conference etc., still it created a period of thaw between world war I & II.

Q14(6)b)

Remarks



P.T.O.

Remarks

Q: 4 (C)

Marshall plan was started by

USA under the Truman's doctrine.

After world war II, ideological differences emerged between capitalist blocks & communist block.

capitalist blocks was led by USA while communist block was led by USSR. ~~So~~ Eastern European countries were under the influence of communist USSR. However these countries were facing various crisis. ~~On one side~~ western European countries were started reviving after world war after the world war. Meanwhile, there was struggle between Britain & USSR for occupation of Greece, when Britain found it difficult

Remarks

Extension of  
 Truman doctrine

to sustain Grace, it transferred the leadership of capitalist world to USA.

USA President Truman came with Marshall Plan (his finance minister) of 13 billion help to European nations. ~~the~~ USSR saw it USA's influence over Europe & rejected it for the east European nations & came back its own communist plan.

However Marshall Plan became more successful compared to communist. Soon west European nations revived from world war crisis while east European countries <sup>were</sup> still suffering. This created resentment among east European nations against USSR. That's why it is commented that "Marshall plan was a bold & imaginative step."

Remarks

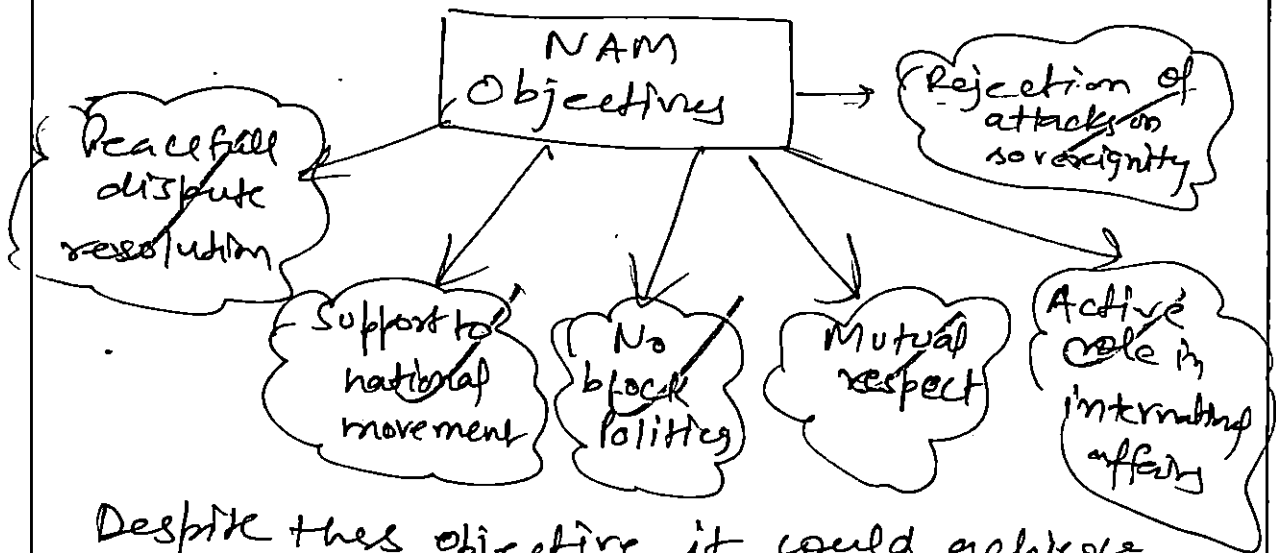
Write → Reaction of Russia — like

Communism (1947), Molotov Plan (1949)

Q: 4(d) Non aligned movement (NAM) was

Q12 started <sup>in 1956</sup> under the leadership of Pt. Nehru,  
Kugoslavian President Marshal Tito, Indonesian  
 President Sukarno, Egyptian leader Col. Nasser  
 & President of Ghana. It got an  
 organized form in 1961.

The objectives of NAM  
 was: 10 fold objective, some of which  
 are:



Despite these objective it could achieve  
limited success!

↳ Could not prevent crisis like Vietnam war

Remarks

Iran-Iraq war, cold war etc



↳ could not serve the freedom aspiration of various colonized countries like India.

↳ Some countries engaged in block politics.

↳ Passive role as compared to United Nations.

However various laudable works like

voice to least developed countries, decolonization,

anti-discrimination, climate change, anti-terrorism

related issues were raised by NAM.

Thus it could not be called failure though much more efforts needed to improve it.

↳ Write about present day  
relevance.

Q: 4(e) First world war was fought

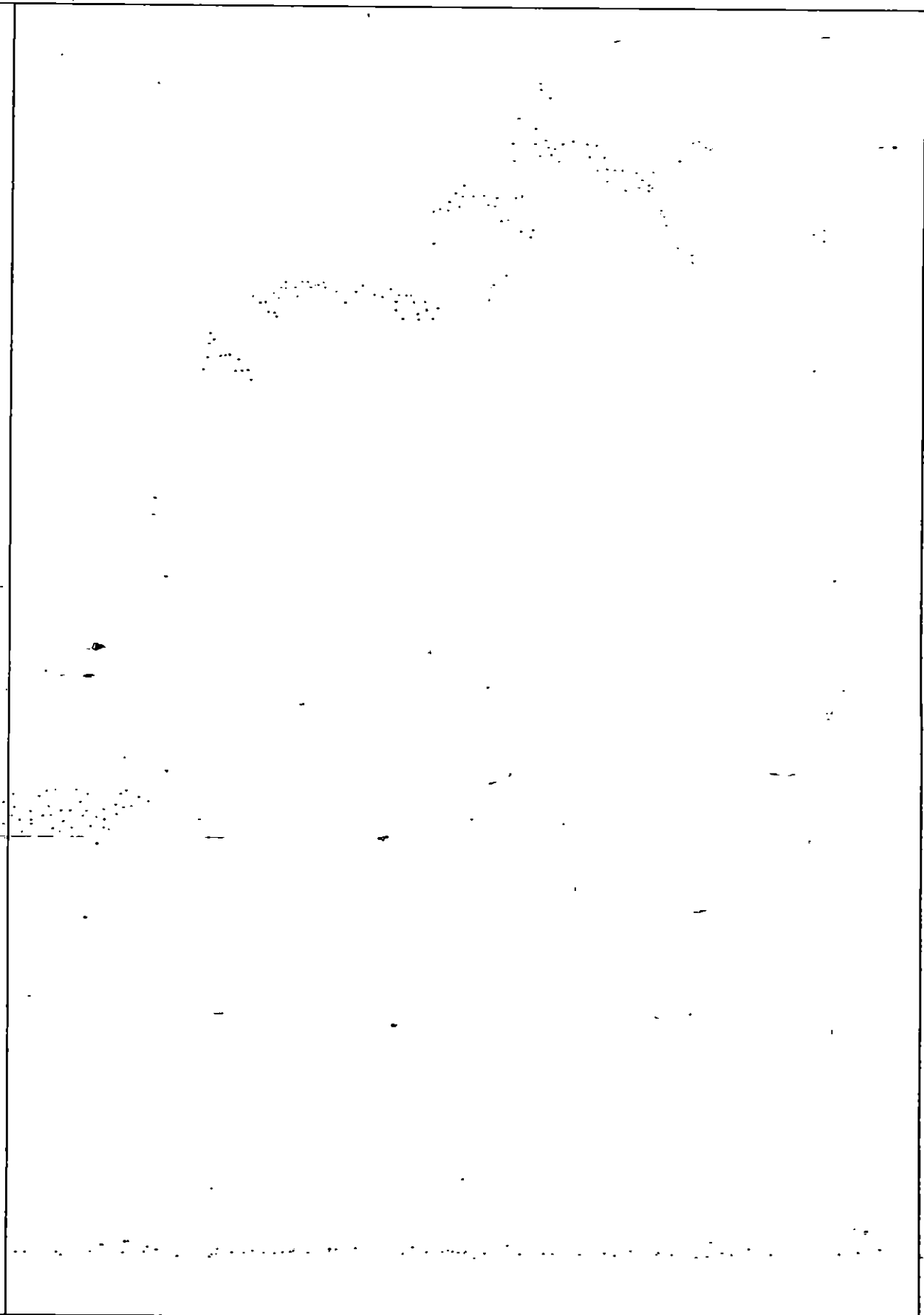
① between axis power (Germany, <sup>Austria</sup> ~~Poland~~)

& allies (Britain, France, USA etc) in

1914-18.

It gave Japan the opportunity to realize her imperialistic designs in the far east in following manner.

Remarks



*Remarks*

5. (a) 'The Wall Street crash(1929) did not cause the depression.' Explain. (15 Marks)
- (b) 'Whatever the weaknesses of the Union Nations Charter, the delegates had blueprinted the machinery for the boldest experiment in international organization yet adopted by man'. Discuss (20 Marks)
- (c) 'The origin of the Cold War started can be traced back to the Bolshevik Revolution'. Comment. (15 Marks)

Q15(a) Depression is the process of continuously

depression in an economy which causes loss of employment, closing up of employment avenues & <sup>generally</sup> economic anarchy.

During 1929, US stock exchange at wall street got crash & created a condition of economic anarchy whose impact was global in nature. Some scholars emphasised that the wall street crash caused the world wide depression. The logic behind their assessment are:

↳ USA was the most economically superior country of the world at that time due to its flourishing trade & vast resources.

Remarks

Global economy was dependent on it, so as & when USA stock exchange collapsed, it affected the world economy at large scale & world wide depression (Asia, Europe, Africa).

While the other section emphasised that wall street crash impact should not be overemphasised because:

↳ It was crashed due to overoptimistic <sup>wey</sup> behaviour of american banks who involved in high lending:-

↳ This kind of situation was absent across the world.

In fact depression was caused by various factors such as political instability, droughts & famine, supply bottleneck etc factor, though wall street crash in fact increase its process.

Remarks root was much deeper

↳ crisis lay on the nature

US economy - The fundamental maldistribution of purchasing power.

8

Q. 5(b) United Nations Organization (UNO) was formed after the World War-II on 24 Oct, 1945. It replaced the League of Nations which was created after the World War-I.

It was created with the objective of maintaining international peace, preserving democratic values & punish the violators.

~~However despite various serious efforts, it could not achieve its target object fully due to various weaknesses,~~

- For its creation, UN Charter was formed which has following weaknesses:

↳ It too has absence of permanent military forces like League of Nations (LON)

thus it created apprehension that it too will get fall like LON.

Remarks

↳ In UNSC, there were veto powers for permanent member which raised concerns regarding its misuse which was evident during Suez-crisis in 1956 when Britain ~~and~~ <sup>France</sup> ~~also~~ vetoed the decision of UN general assembly.

↳ It calls for international peace & security but again it does not provide any punitive action for its breach.

These weaknesses, however could not stop its creation. ~~It~~ UNO was created & proved to be boldest experiment ever.

↳ It has <sup>become</sup> largest global organization with membership of 193 states.

↳ It has played very important role in

Remarks

solving various exists like Korean war,  
Iran-Iraq war, Sudan war etc.

↳ Its socio cultural agency like UNESCO, UNICEF  
etc are quite successful in propagating  
its objectives.

↳ International Court of Justice (ICJ) has  
solved various international dispute  
as well.

↳ Various resolutions were taken in important  
matter like terrorism, climate change etc.

↳ Peacekeeping forces were used for maintaining  
peace & security.

Thus in all cases, UNO charter  
became successful & at least better than  
its predecessor i.e. LON. Thus it proved  
the success of boldest experiment in  
international organization adopted by man.

Remarks

↳ Key words boldest

↳ are these words  
in your answer

Q15C) Cold war (1945-1991) was the war of

(5/2)

ideology between the two superpowers i.e. USA & USSR. It was ended in 1991 with the disintegration of USSR.

There were various source of origin of cold war such as mistrust during world war - II, aggressive policies of leaders etc but the most important origin of cold war was Bolshevik Revolution (1917).

Bolshevik revolution (1917) changed the political order in Russia. It changed monarchical system with communist regime. It was the 1st example in the history where idea of communism became reality.

This communist regime was outcasted by capitalist nations like USA, Britain etc.

Remarks



They did not recognise communist regime till 1933. Even though capitalists & communists fought together against Nazism & Fascism during second world war, the level of trust between them was scarce.

This was evident when serious differences emerged between them during Yalta, Potsdam conference, USA didn't inform about atom bomb blast & above all delay in opening of 2<sup>nd</sup> front against Germany.

These factors made Communists believe that capitalist nations like USA consider them the bigger enemy than even Nazi forces. From here the ideological difference got widened & soon after the world war-II both nations started involving in cold war.

Thus it was the

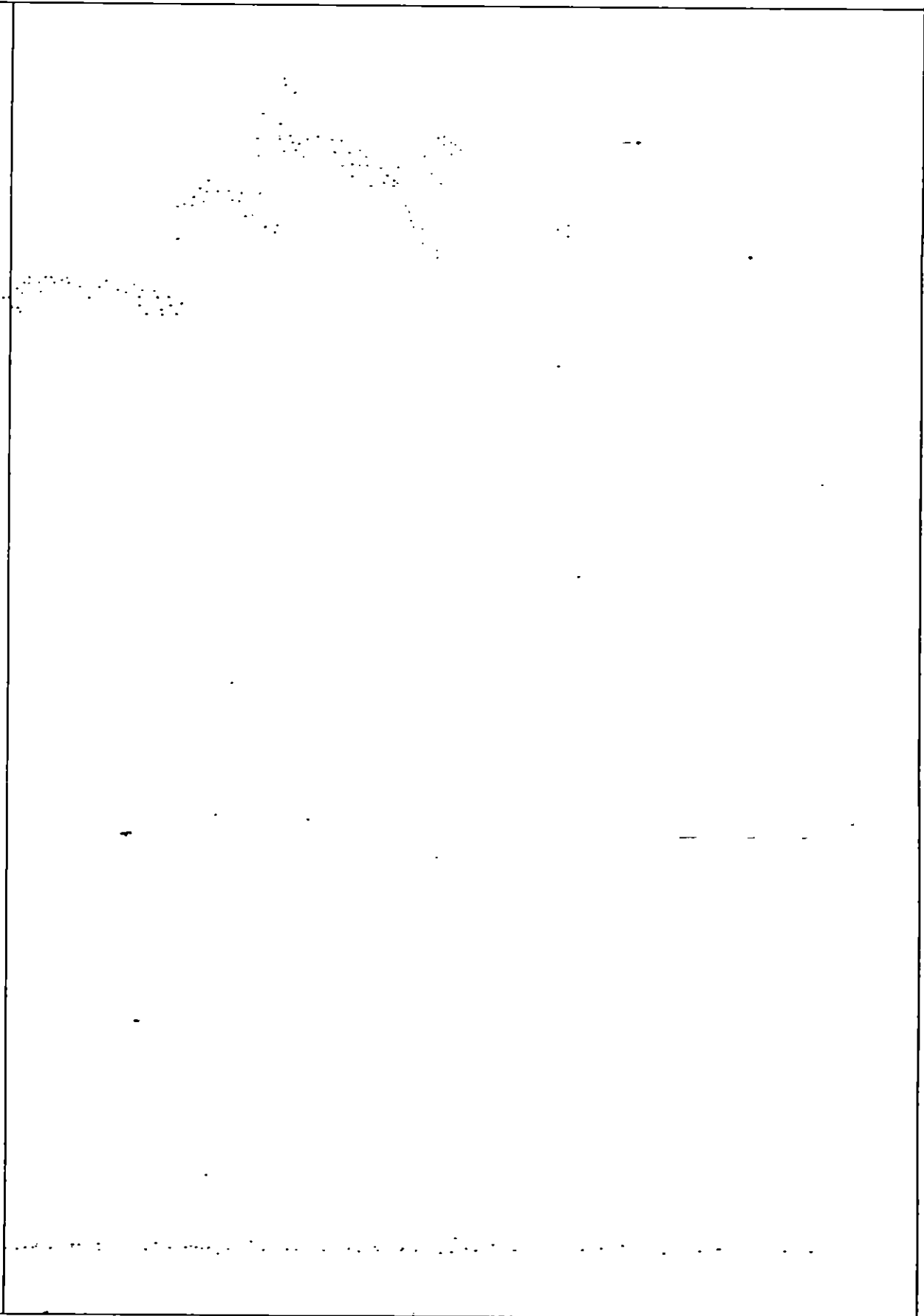
Remarks Bolshevik revolution which scripted cold wars

lack of facts and analysis

*Remarks*

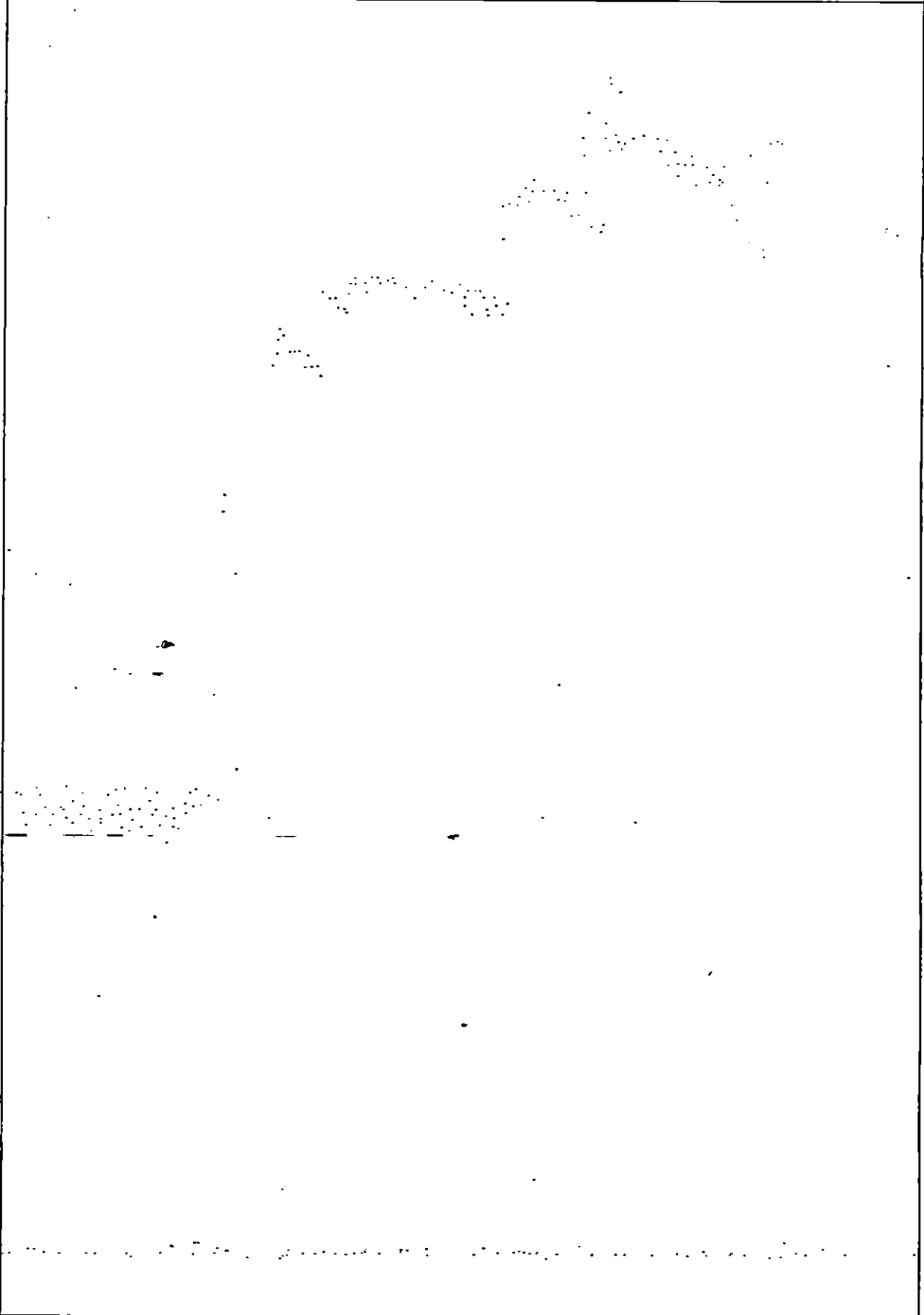
6. (a) 'France is the eternal and mortal enemy of the German nation.' Comment. (15 Marks)
- (b) 'The most fundamental method of work, which all Communists must firmly bear in mind, is to determine our working policies according to actual conditions.' Analyze Mao Zedong's statement. (15 Marks)
- (c) 'Between the anvil of united mass action and the hammer of the armed struggle we shall crush apartheid and white minority racist rule.' Explain. (20 Marks)

*Remarks*

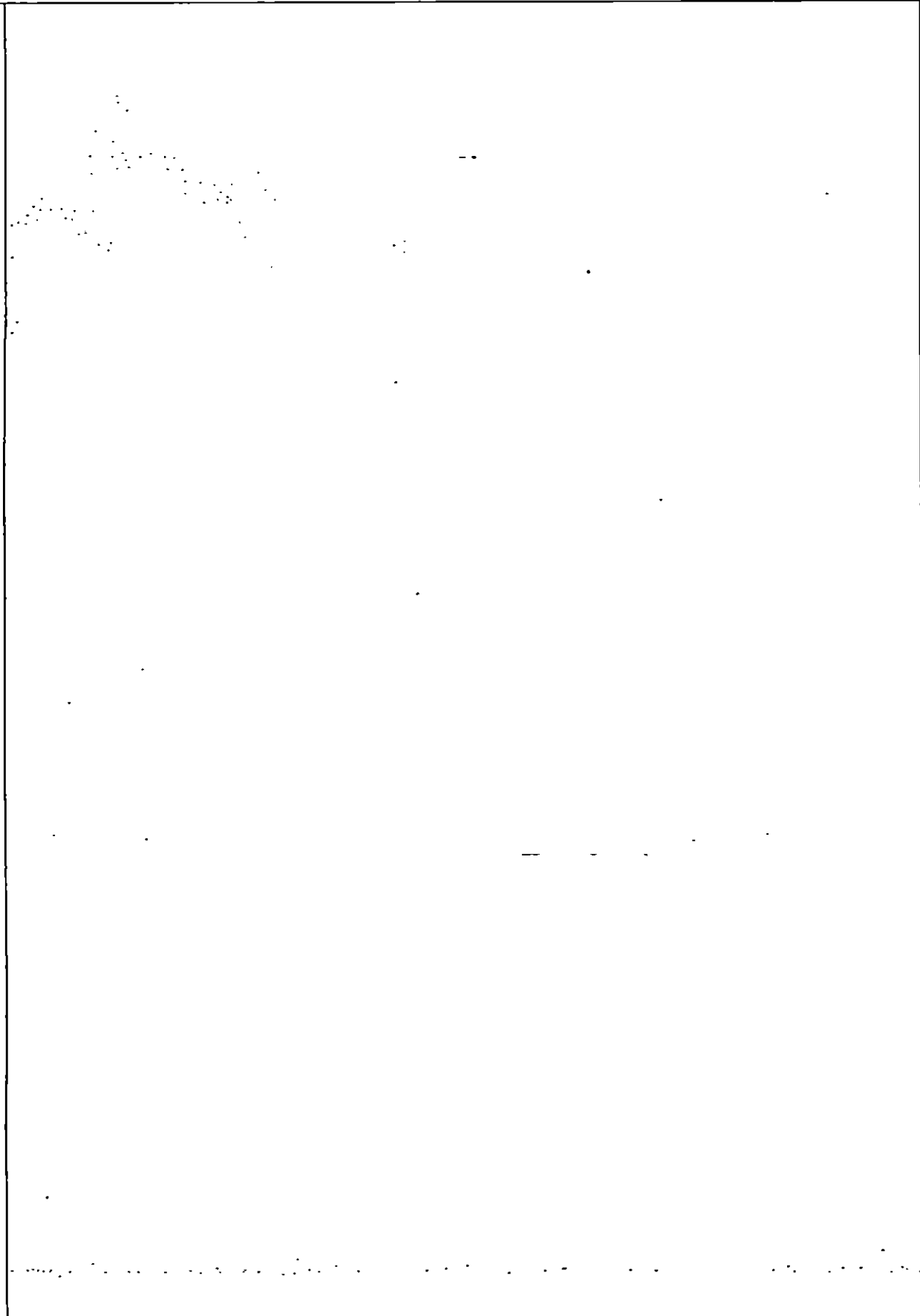


*Remarks*

*Remarks*



*Remarks*



*Remarks*

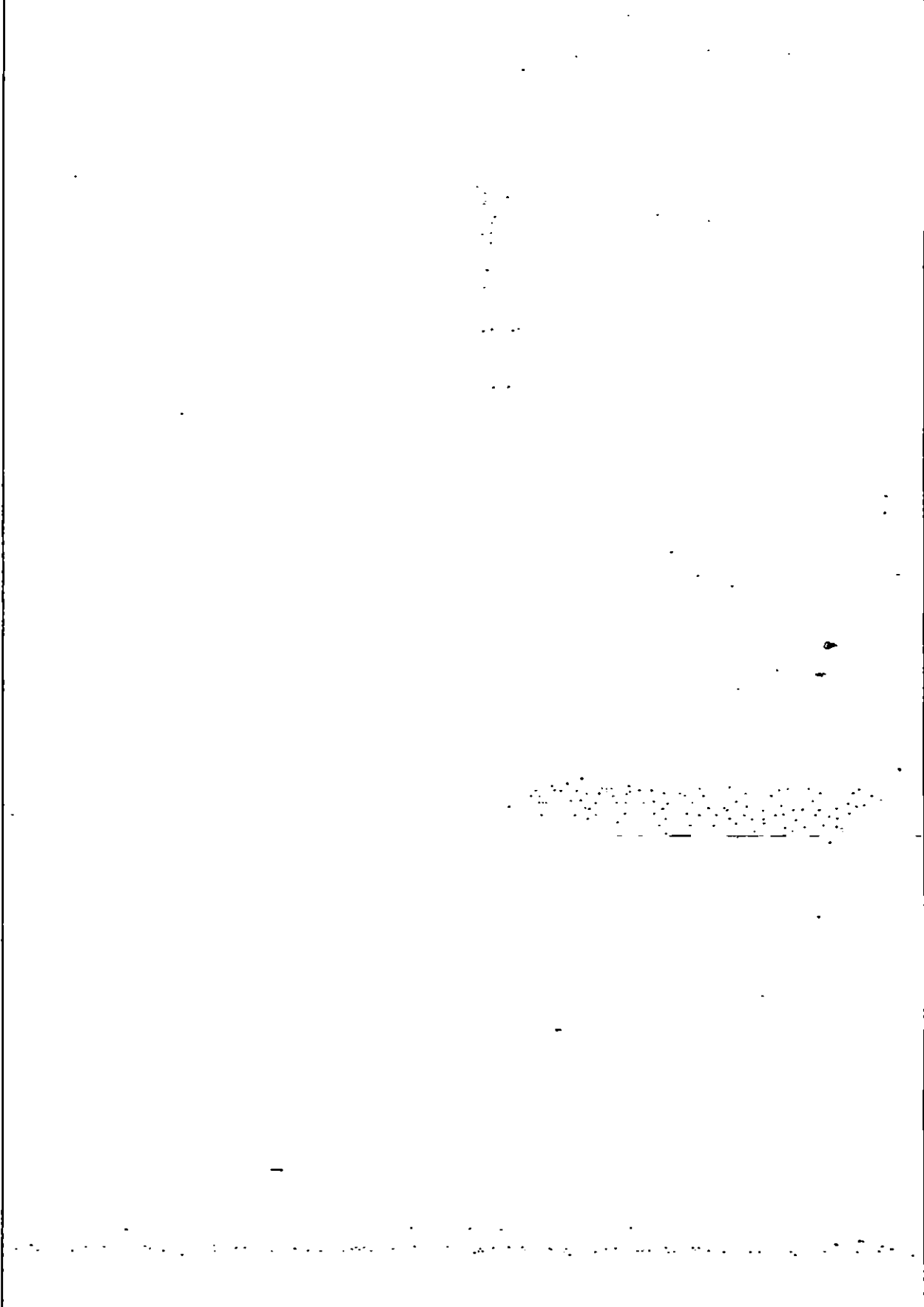
|  |
|--|
|  |
|--|

*Remarks*





*Remarks*



*Remarks*

HISTORY OPT  
TEST-3 : MAP:3

**INDIA**

WITH AFGHANISTAN, BANGLADESH, BHUTAN, NEPAL,  
MYANMAR (BURMA), PAKISTAN AND SRI LANKA

